

**Jamison** commercial re  
New York City

**710**  
Greenwich

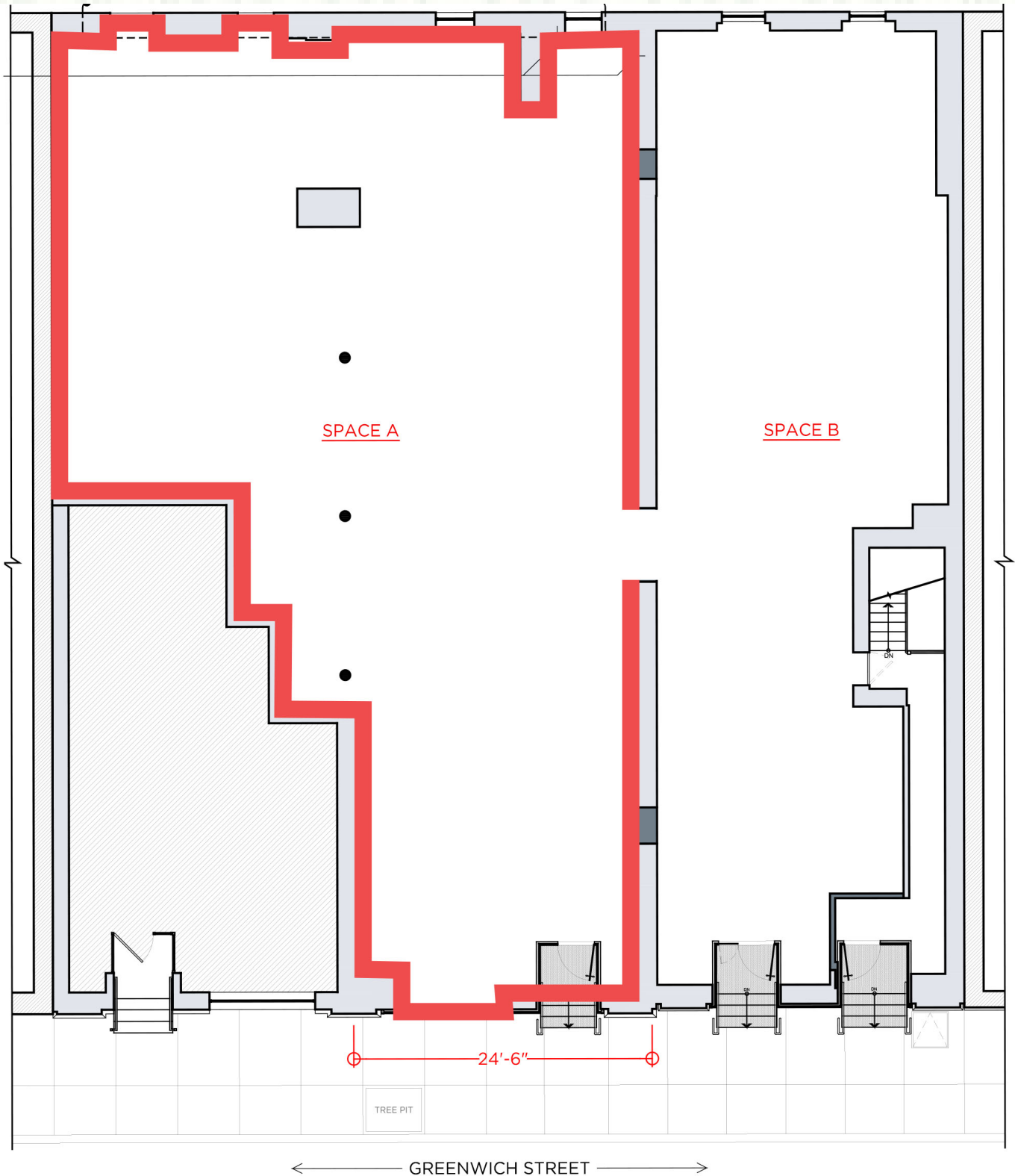


## 710 Greenwich Retail

- 25' of frontage
- 3,500 sq ft on street
- 14' ceilings
- Close proximity to Meat Packing District, and Fashionable Bleecker Street

For Lease  
3,500 SQFT  
Space

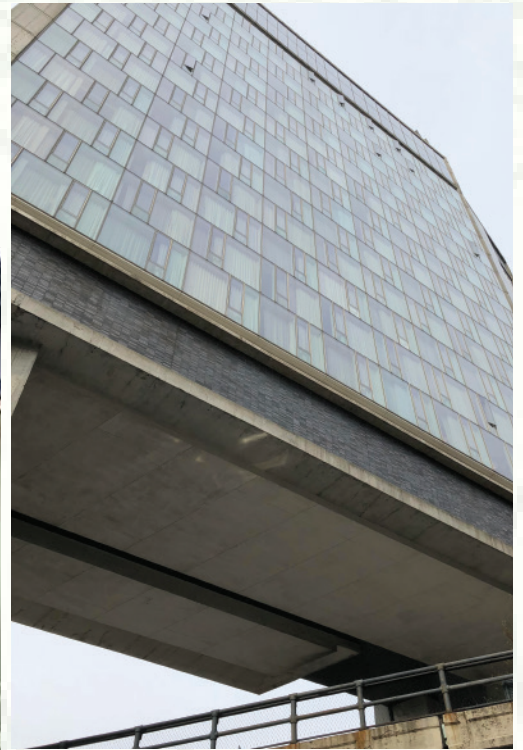
Price available  
upon request



# Jamison commercial re

New York City

# 710 Greenwich



## Nearby Retailers and Points of Interest In The West Village and Meat Packing District:

### West Village:

Urban Zen  
Sandro  
Nars  
Zadig&Voltaire  
Bond No. 9  
Robert Marc  
James Perse  
Bruno Cucinelli  
Jo Malone

Paul Smith  
Cynthia Rowley 7 For  
All Man Kind Annick  
Goutal  
Intermix  
Sisley Paris Boutique  
Village Apothecary

### Meat Packing District:

The Standard Hotel  
Tesla  
Apple Store  
The Whitney Museum  
Samsung  
Restoration Hardware  
Hermes Paris  
Jefrey's Department  
Store  
The High Line

Hugo Boss  
Warby Parker Asics  
Diane Von Furstenberg  
L'Occitane  
Lulu Lemon Athletica  
Blue Bottle Cofee  
Starbuks  
Alice and Olivia