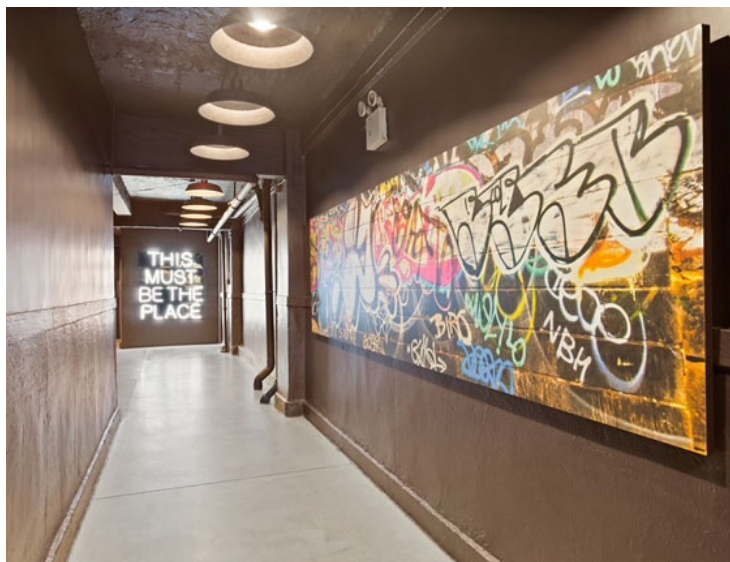


Jamison Commercial RE
New York City

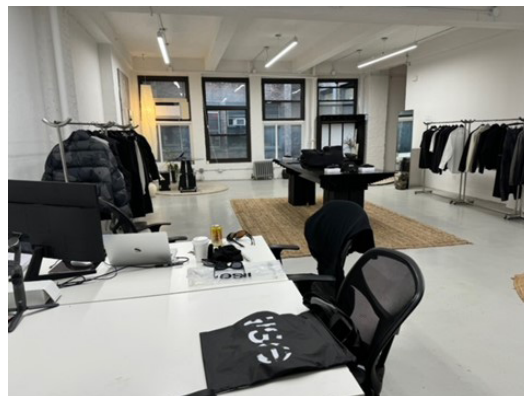
195
Chrystie Street
New York City



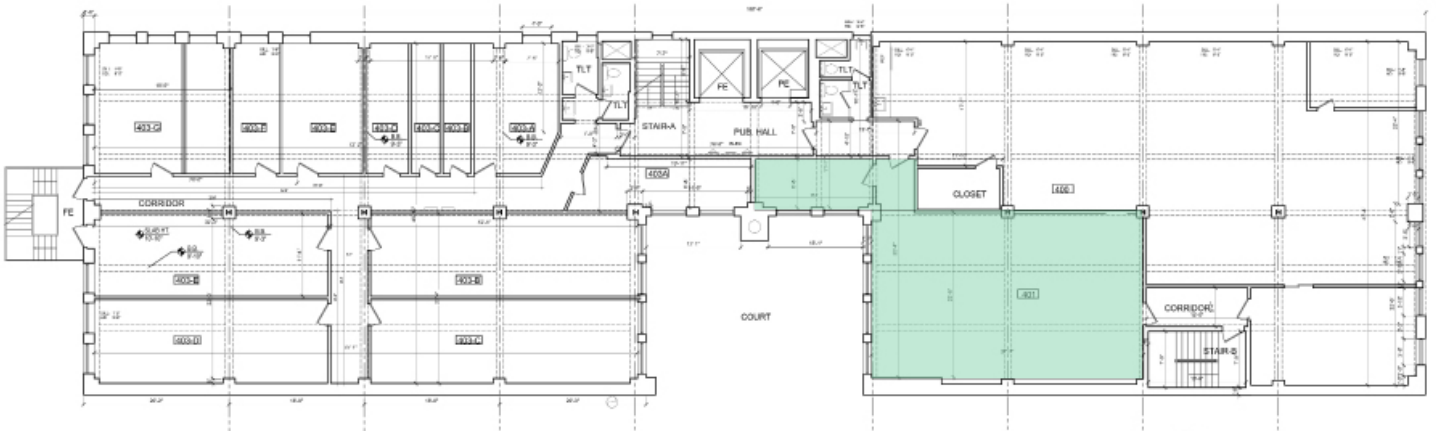
Office Space for Lease

- Newly renovated lobby
- High ceilings
- Citi Bike located directly across street
- Co-tenants include creative companies from the fashion, technology, media, and art world
- Neighbors include The New Museum, Ian Shrager's Public Hotel, amazing restaurants, shopping, and art galleries
- Close proximity to public transportation, Soho, Noho, Nolita, China Town, and The Financial District
- Wide open loft-like space

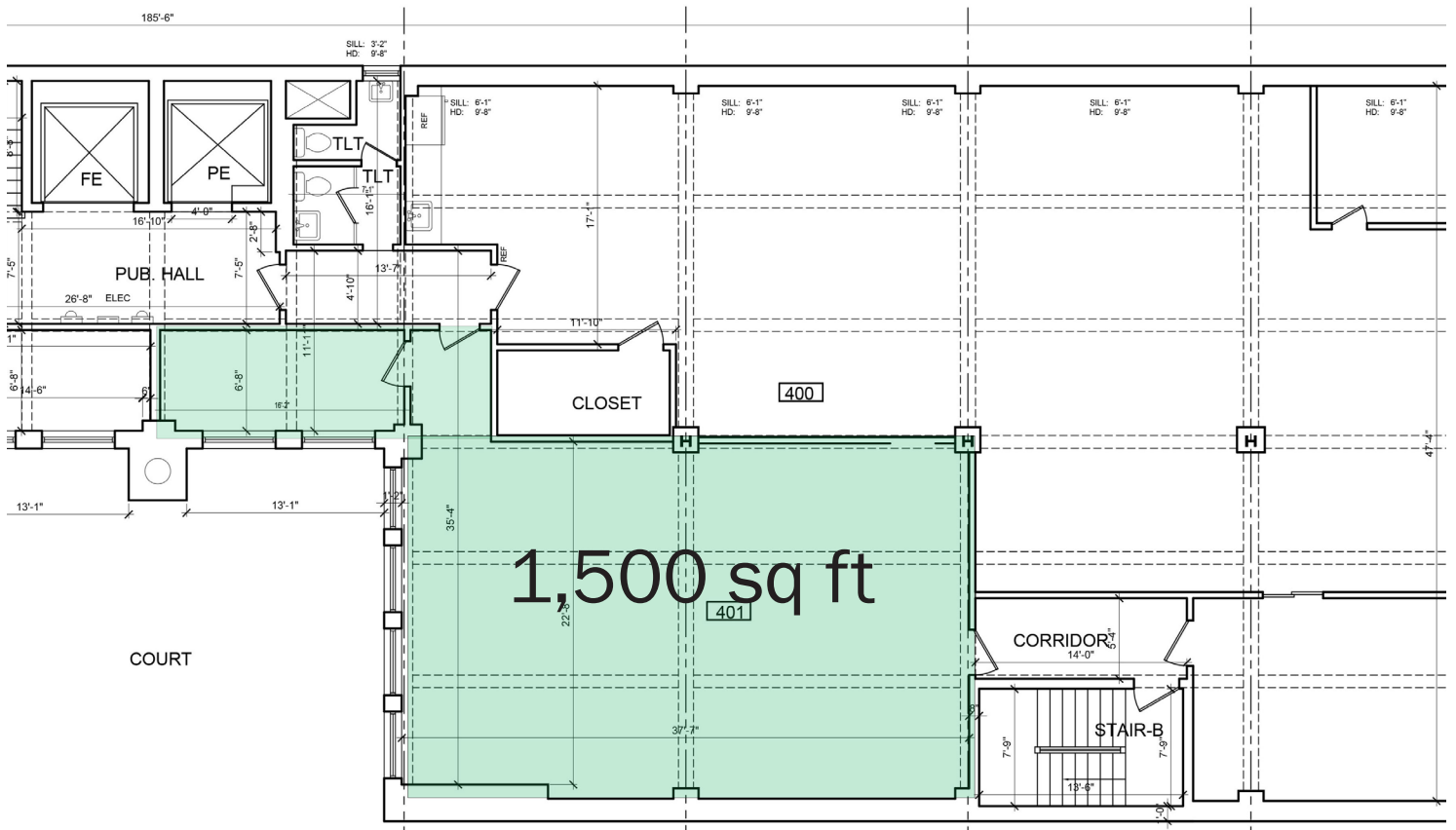
For Lease
1,500 sq ft



Typical Floor Plate



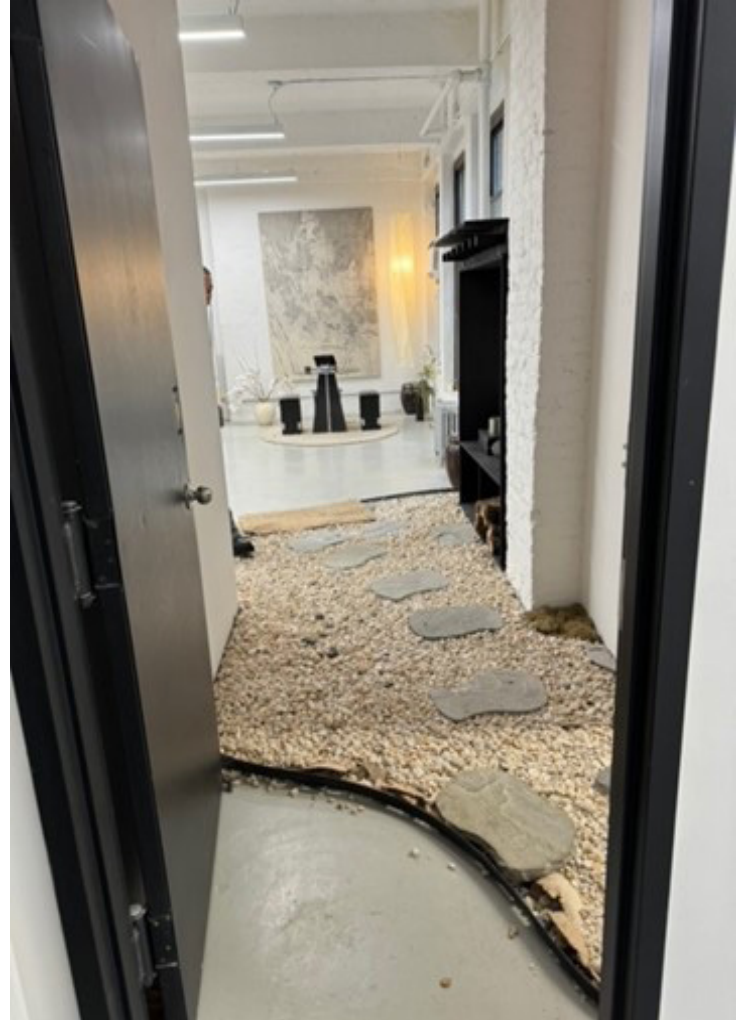
195 Chrystie Unit 401 Detail



Jamison Commercial RE

New York City

195
Chrystie Street
New York City



- Newly renovated office suite
- Zen-like vibe
- Loft-like column-free space
- New light fixtures
- The perfect creative environment

Jamison Commercial RE
New York City

195
Chrystie Street
New York City



The New Museum



Ian Shreger's Public Hotel

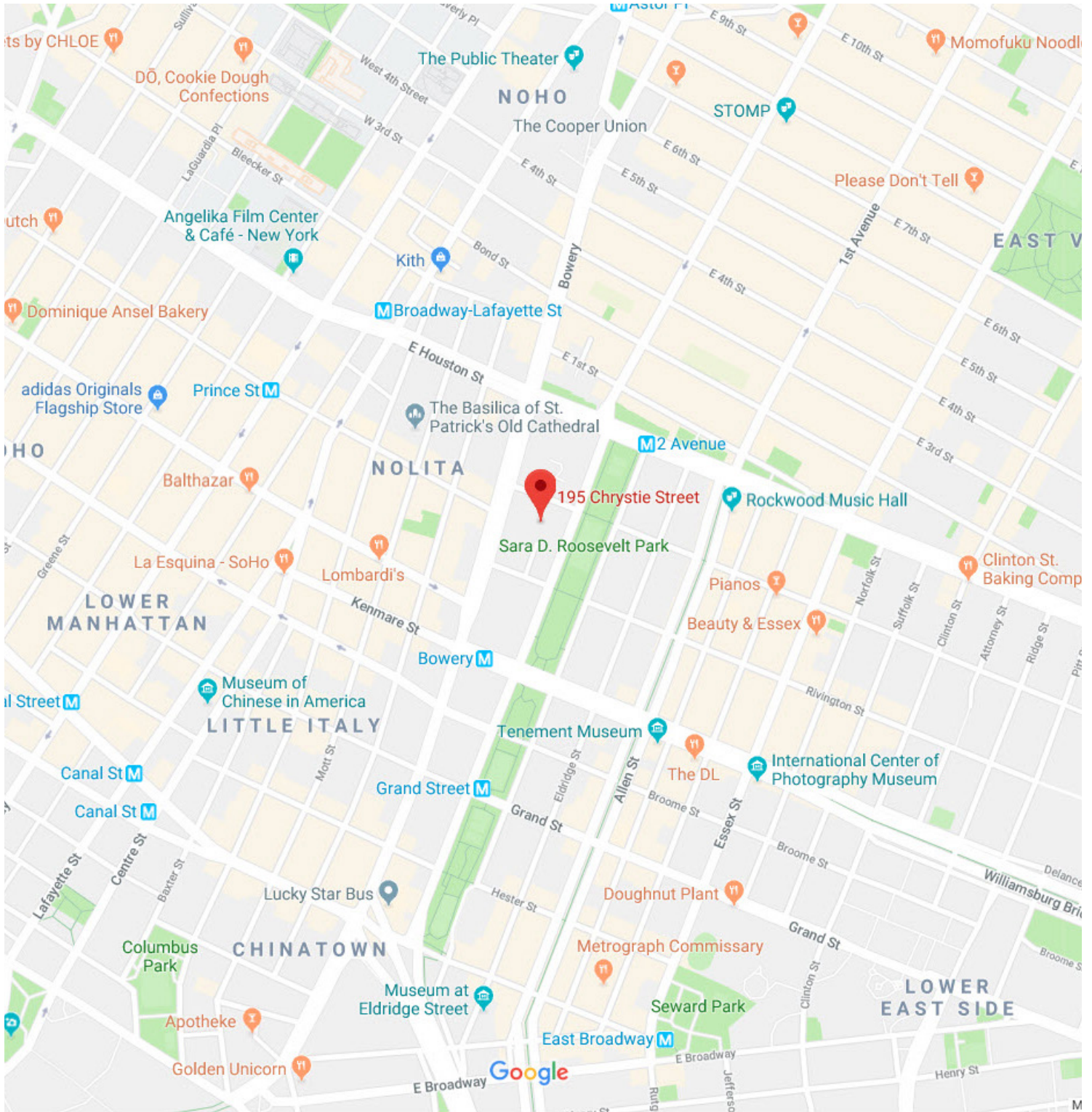


Sara D. Roosevelt Park

Jamison Commercial RE

New York City

195 Chrystie Street New York City



Jamison Weiner

646-245-3254

jweiner@Jamisoncommercialre.com