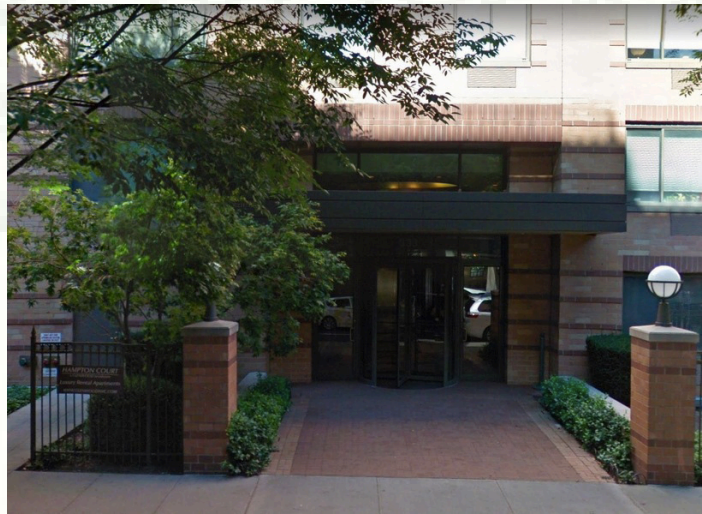


Jamison Commercial RE
New York City

345
East 102nd Street



Medical/Community Facility Space for Lease

- The building has class A quality finishes.
- Glenwood Management is the owner of the building.
- Landlord will Build-to-Suit/TI money available
- TI money for qualified candidates
- 13-14' ceiling heights
- Located in a new mixed use residential retail and commercial building

For Lease

FLOOR 1

Space A - 1,500 sq ft

FLOOR 2:

Space B - 6,960 sq ft

Space D - 5,281 sq ft

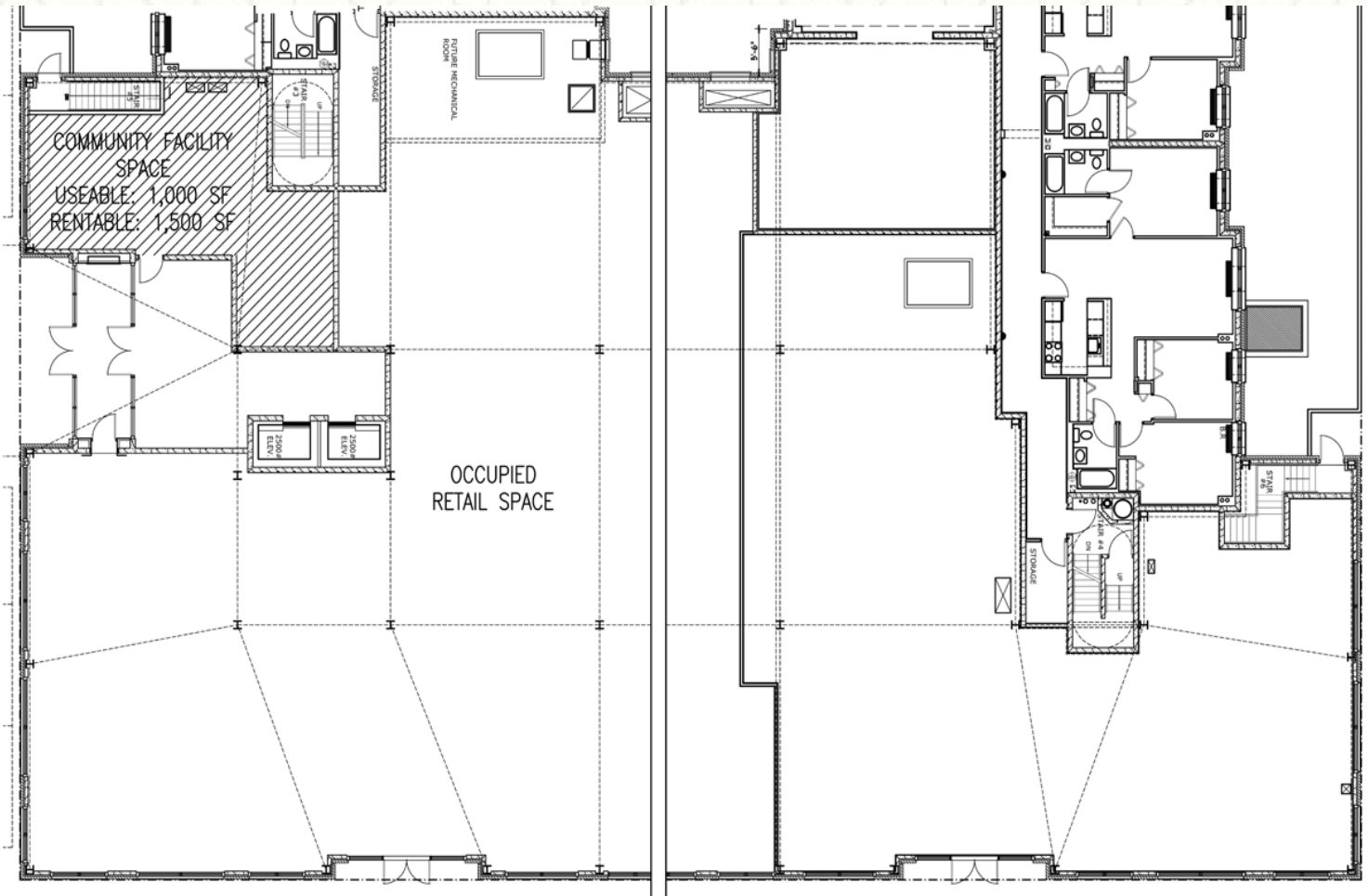
FLOOR 4:

Space A - 5,284 sq ft

Jamison Commercial RE
New York City

345
East 102nd Street

Floor 1

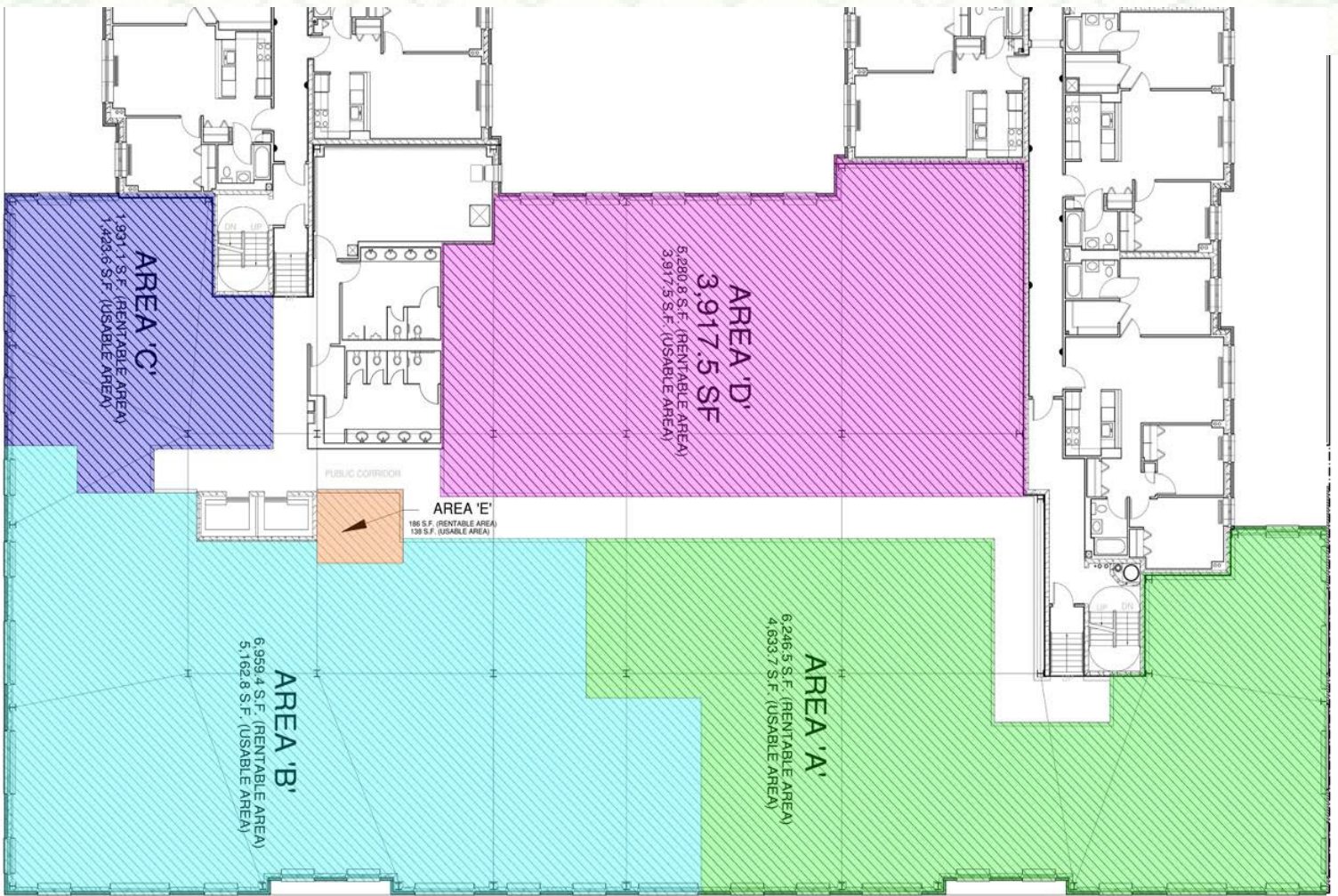


First Avenue

Jamison Commercial RE
New York City

345
East 102nd Street

Floor 2

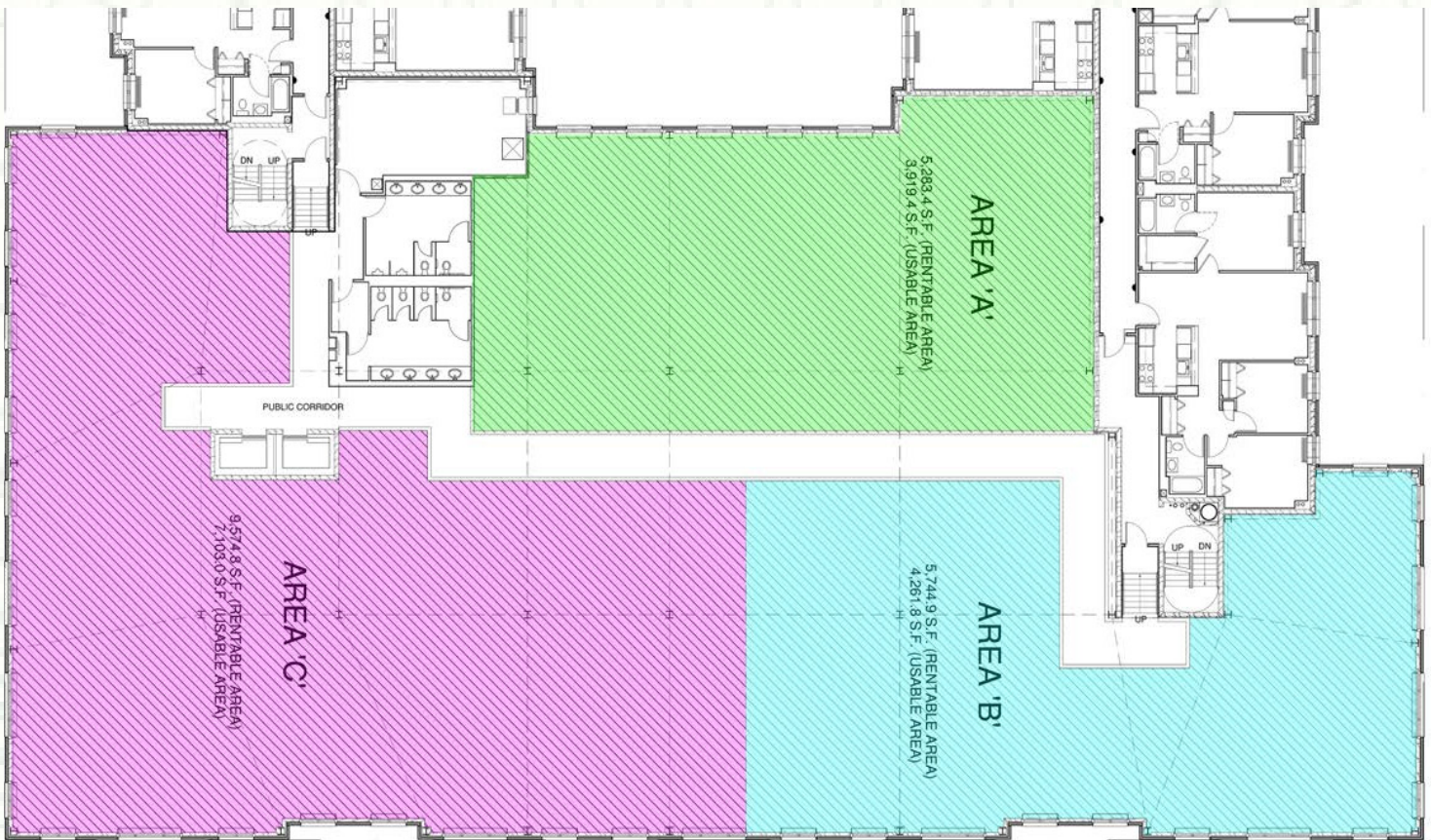


First Avenue

Jamison Commercial RE
New York City

345
East 102nd Street

Floor 4



First Avenue